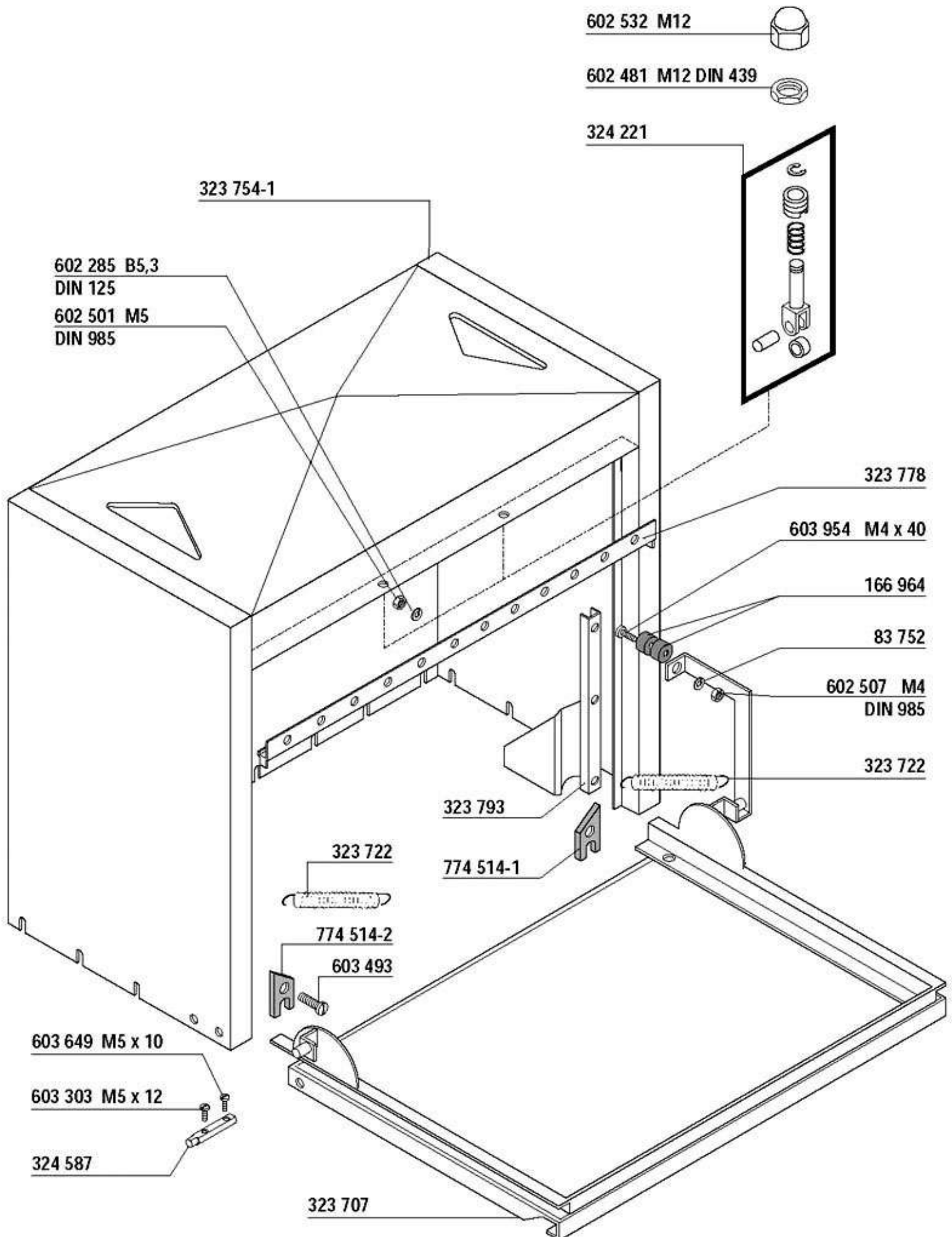
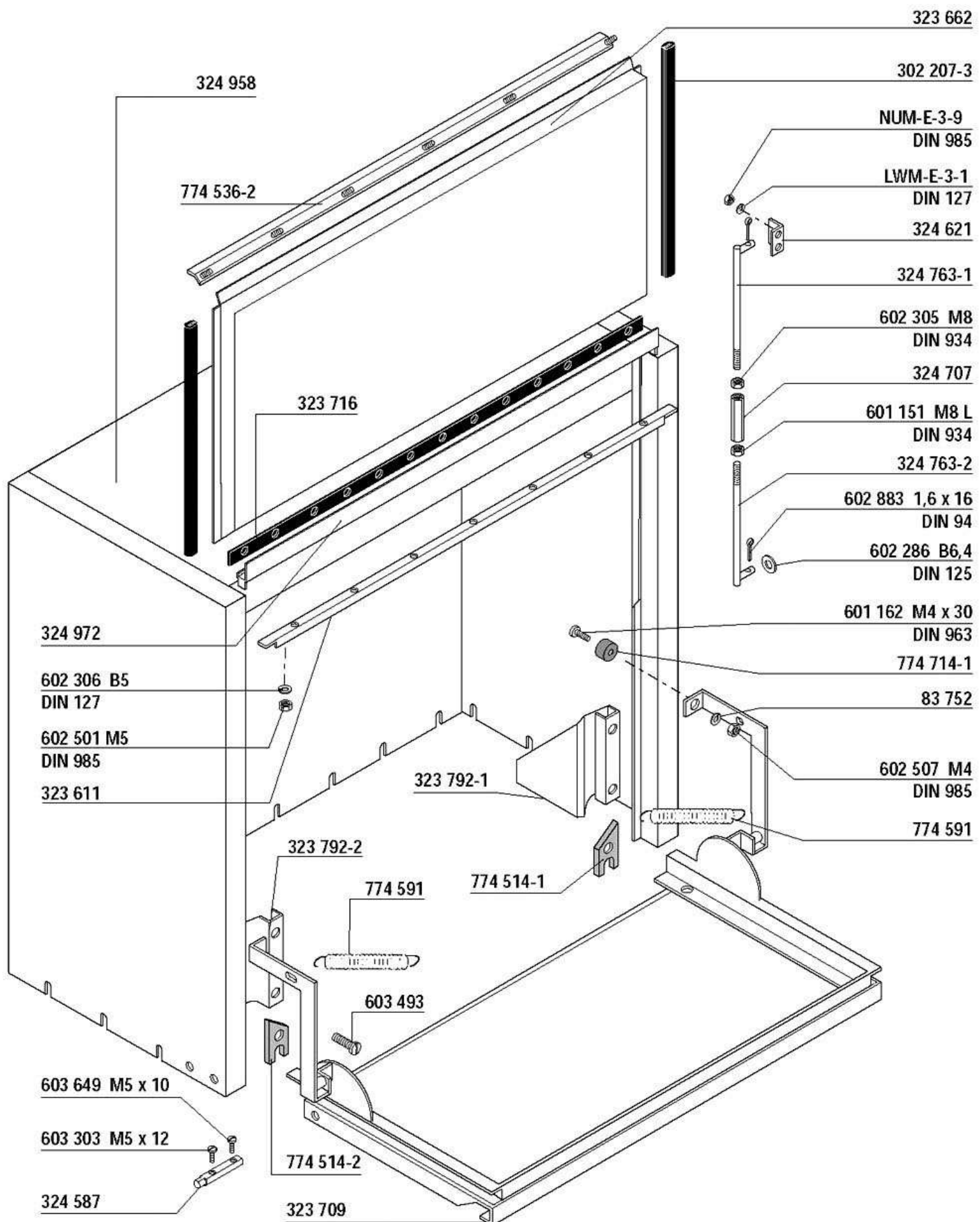


HOBART



UX-60 SERIE



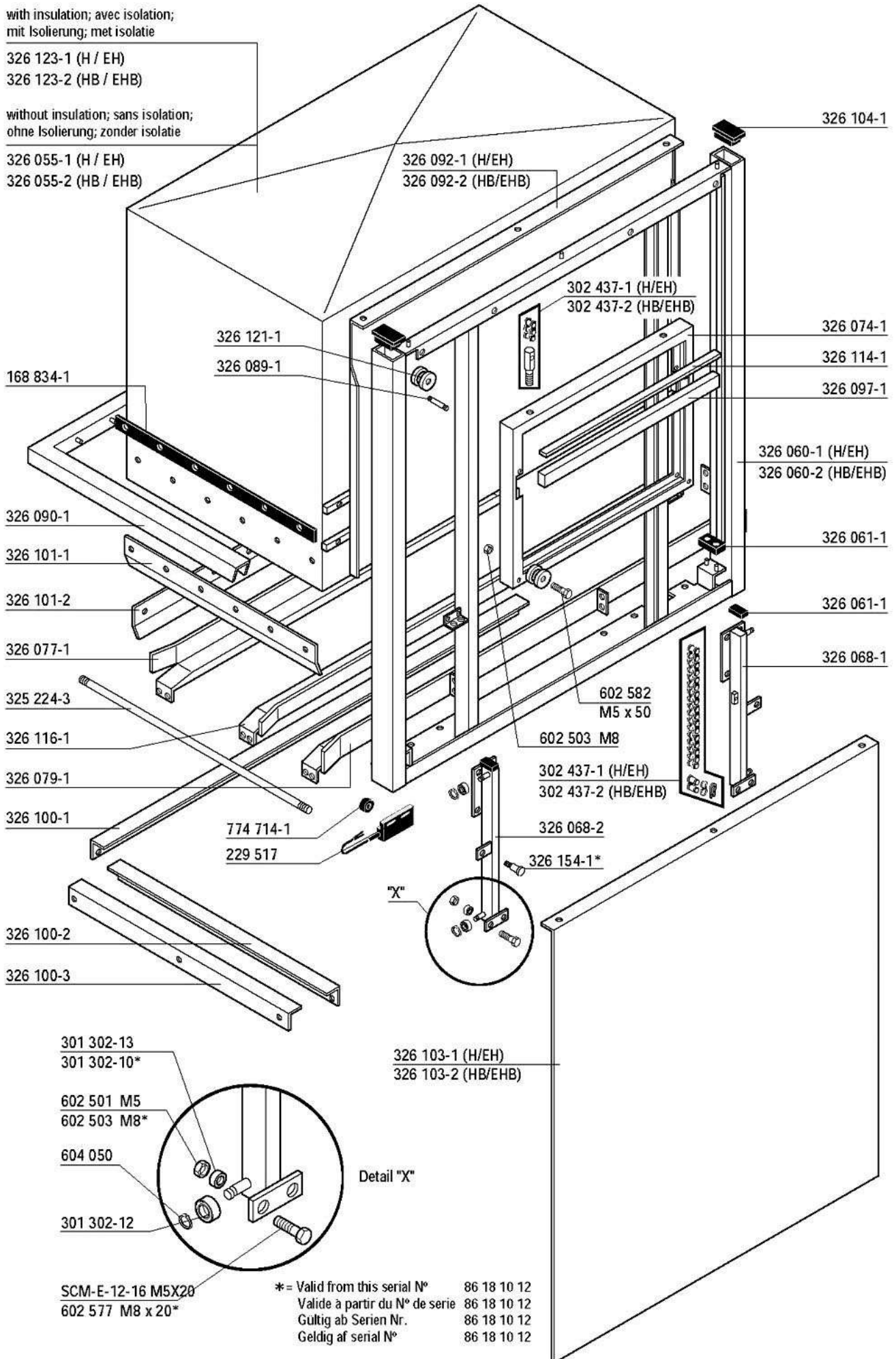


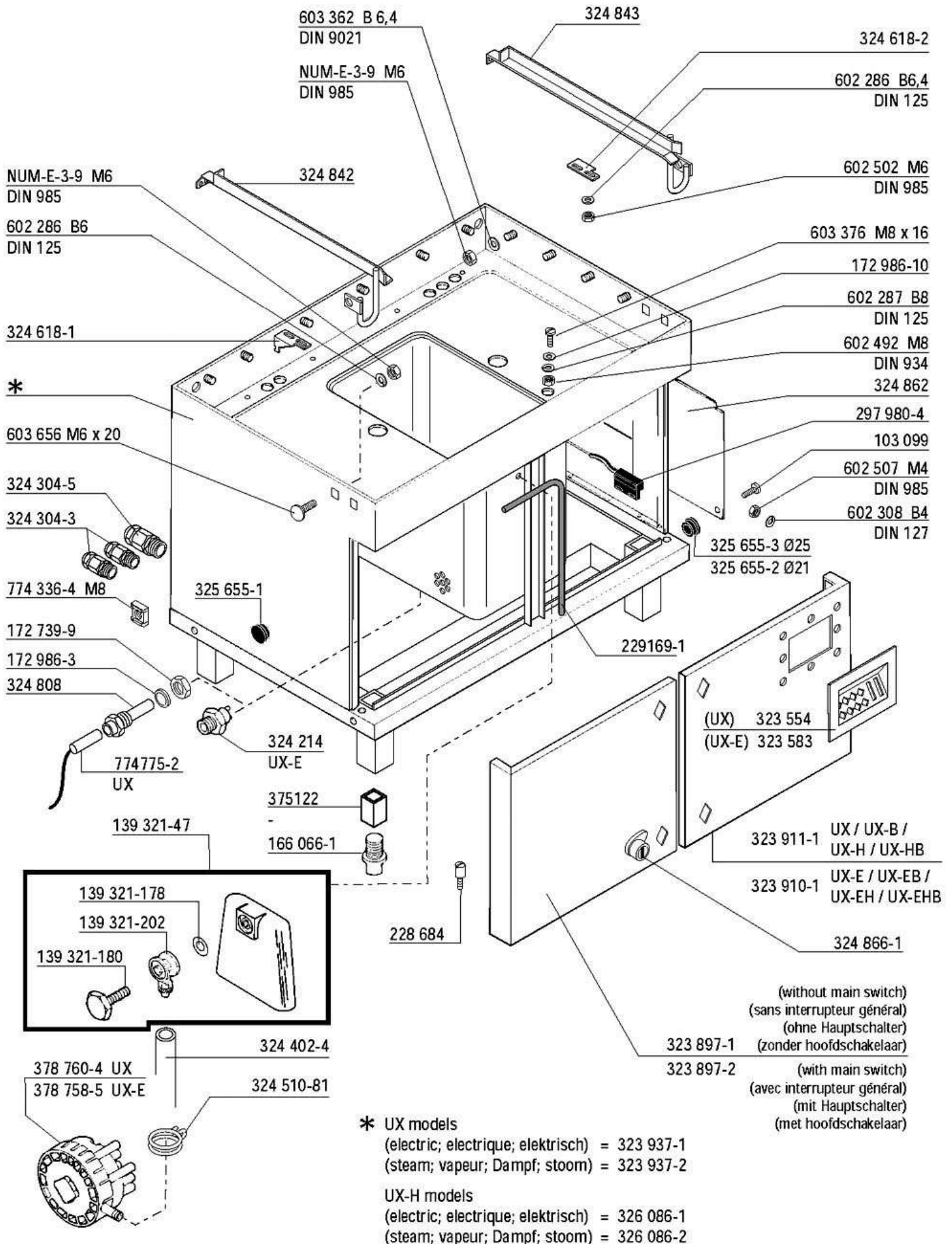
with insulation; avec isolation;
 mit Isolierung; met isolatie

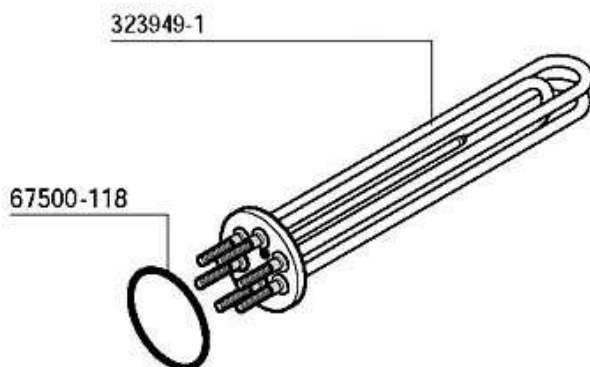
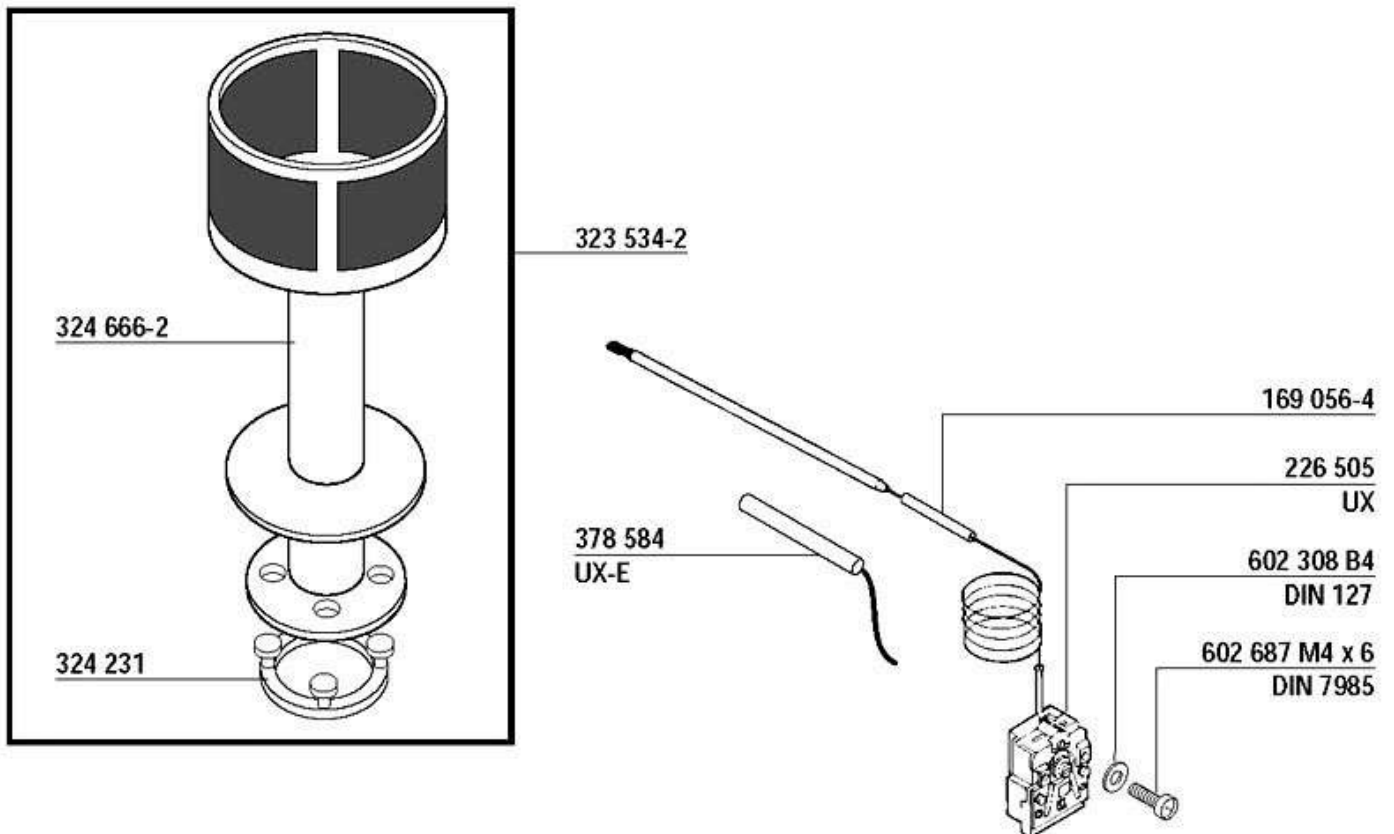
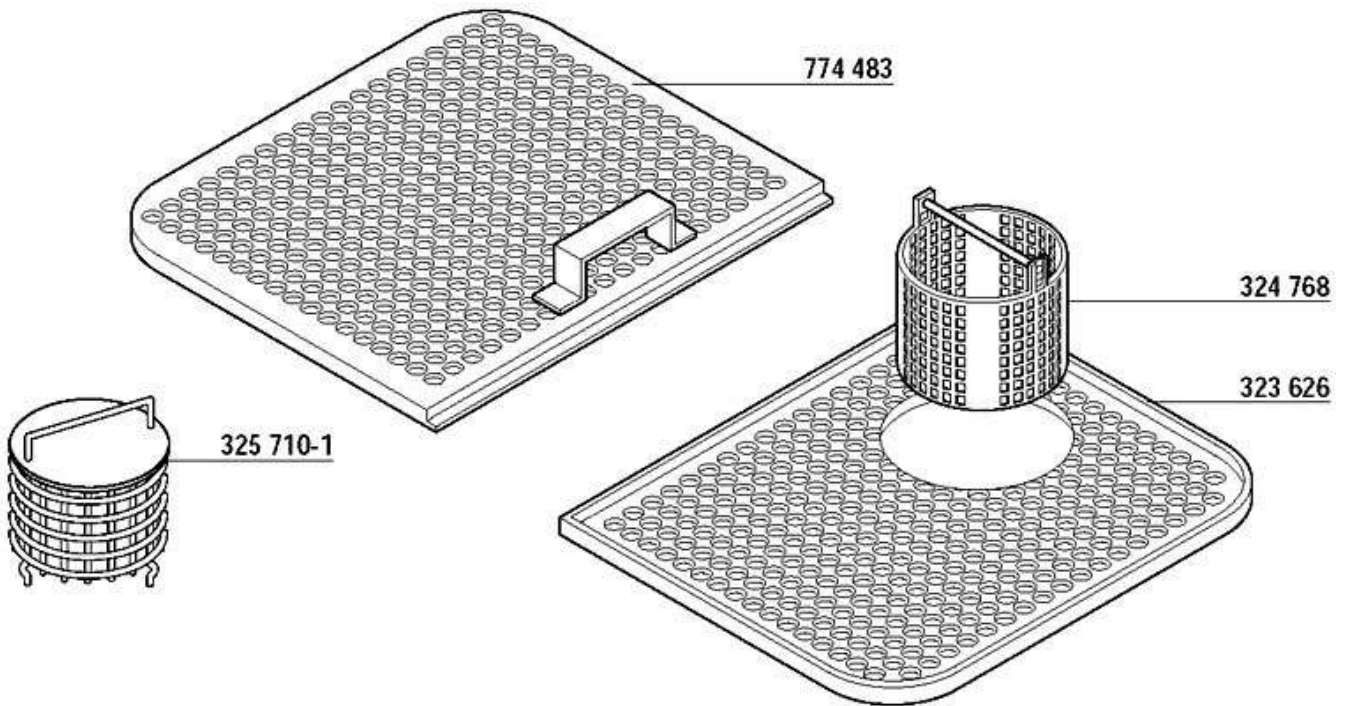
326 123-1 (H / EH)
 326 123-2 (HB / EHB)

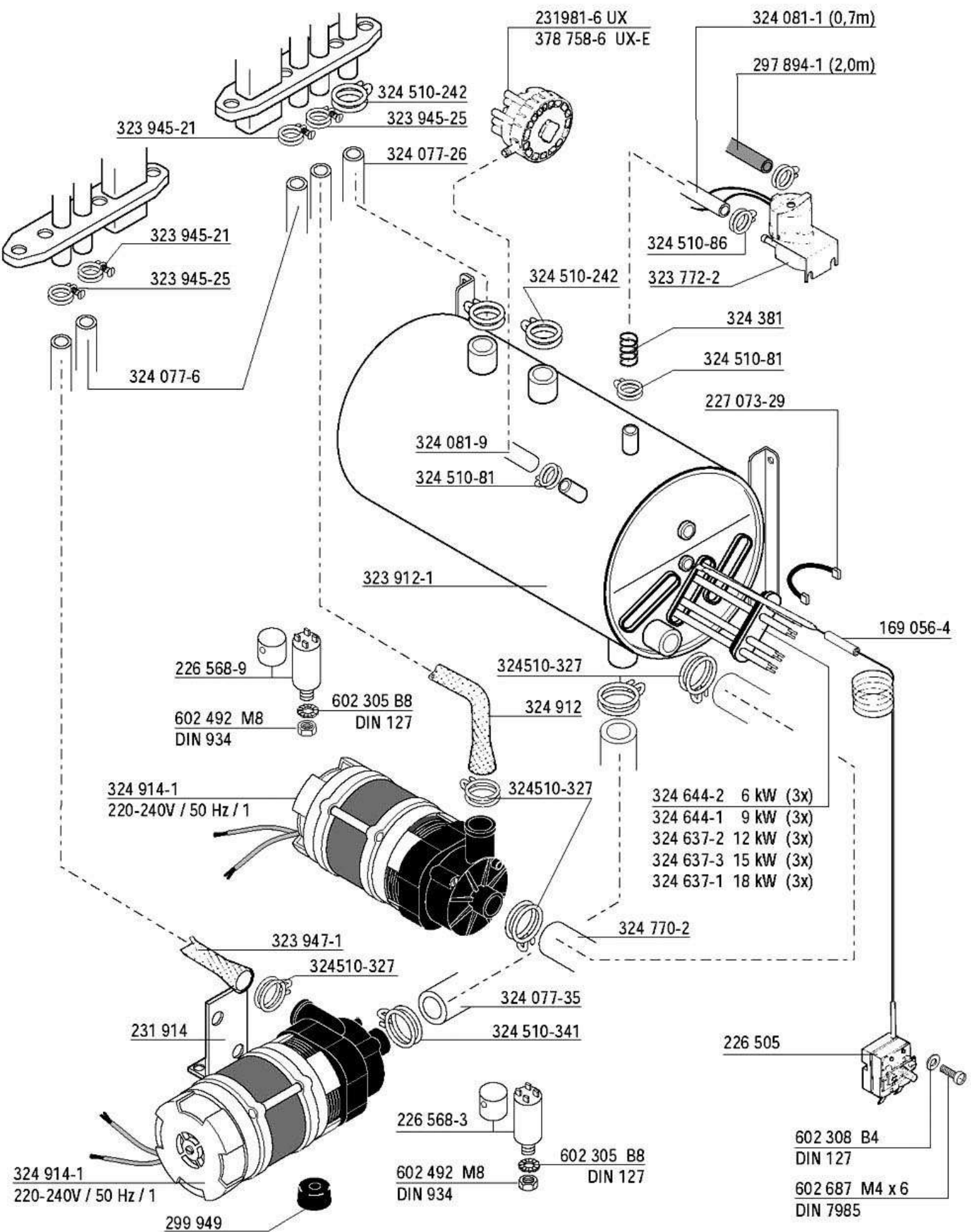
without insulation; sans isolation;
 ohne Isolierung; zonder isolatie

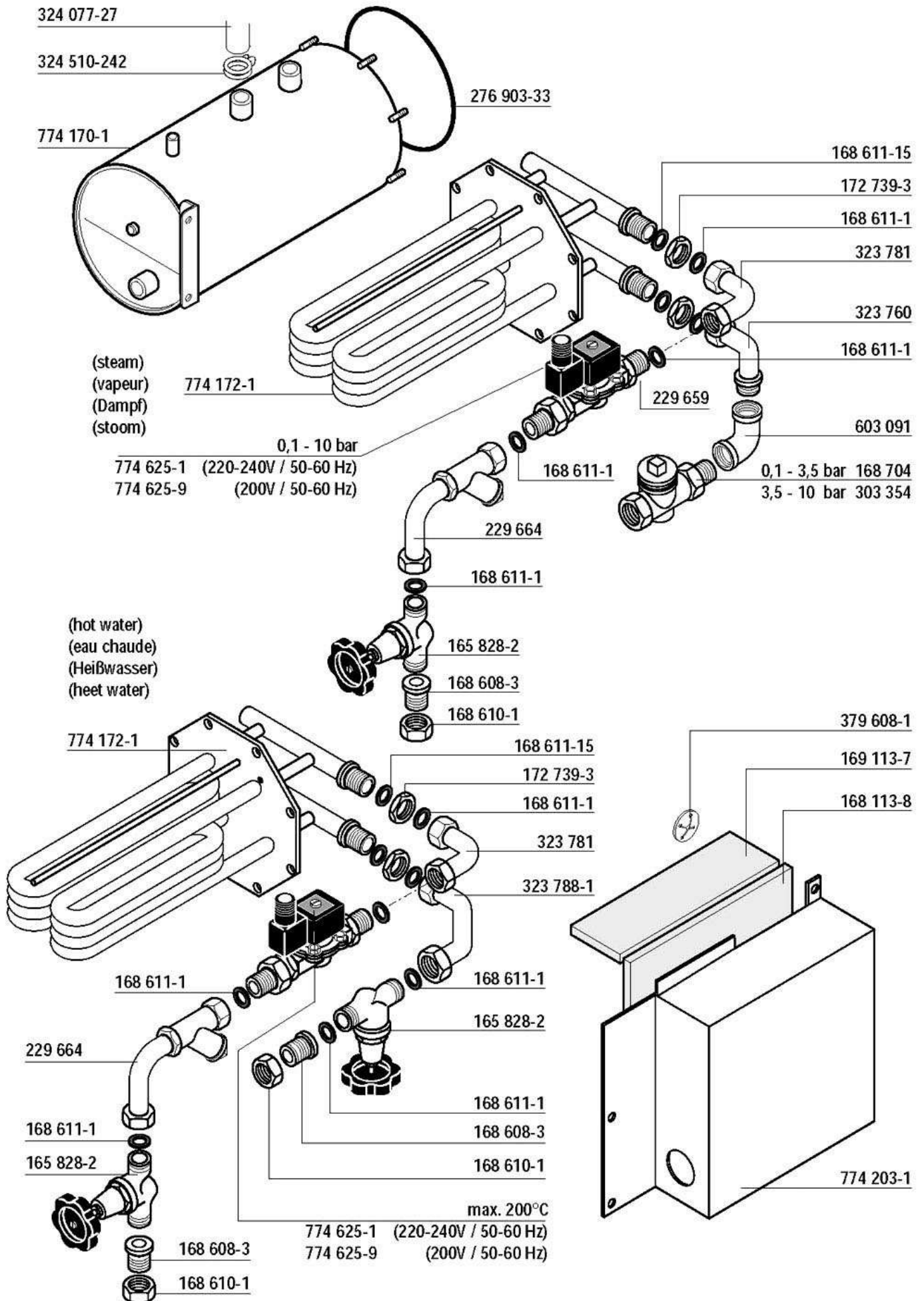
326 055-1 (H / EH)
 326 055-2 (HB / EHB)

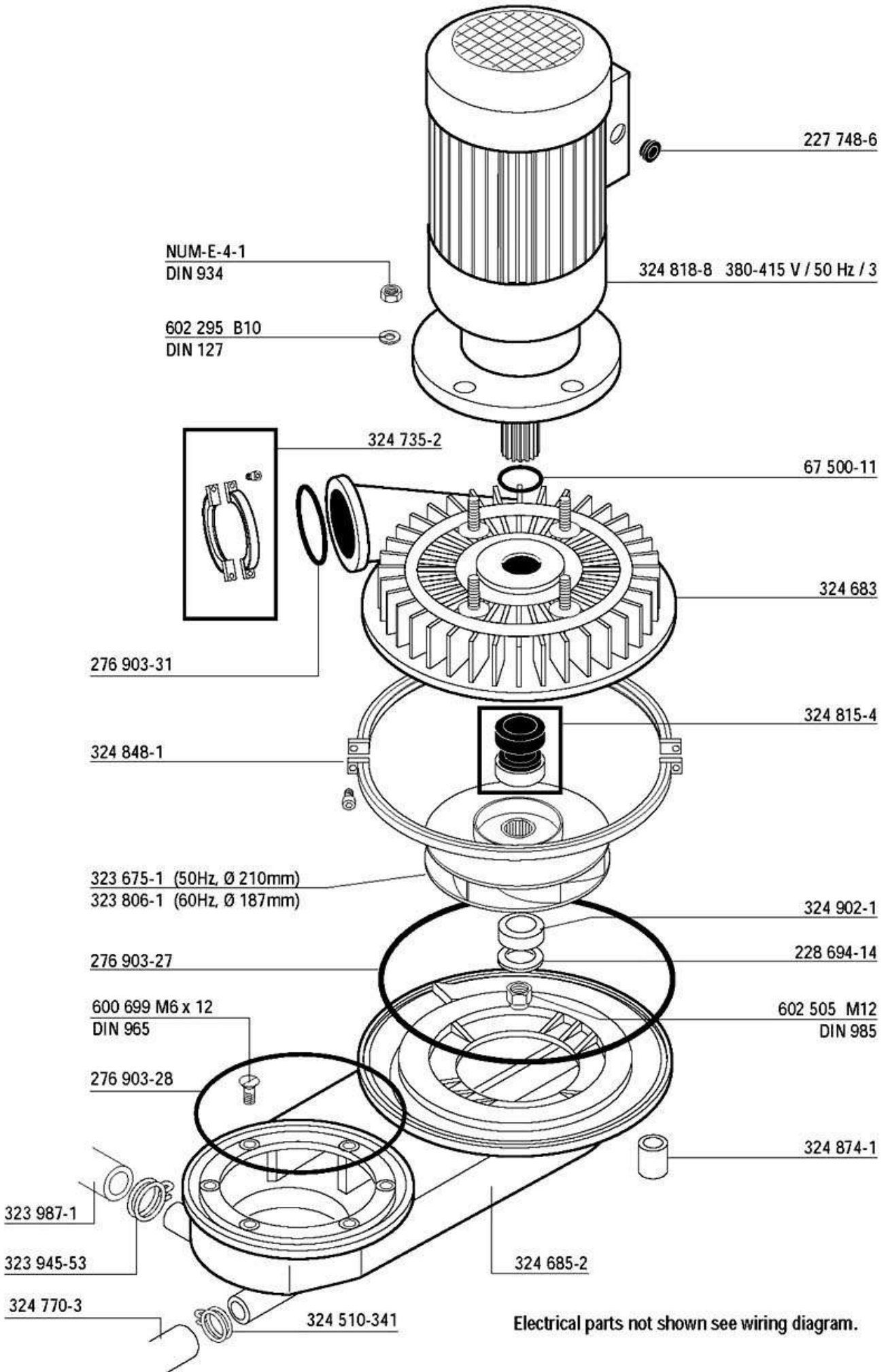








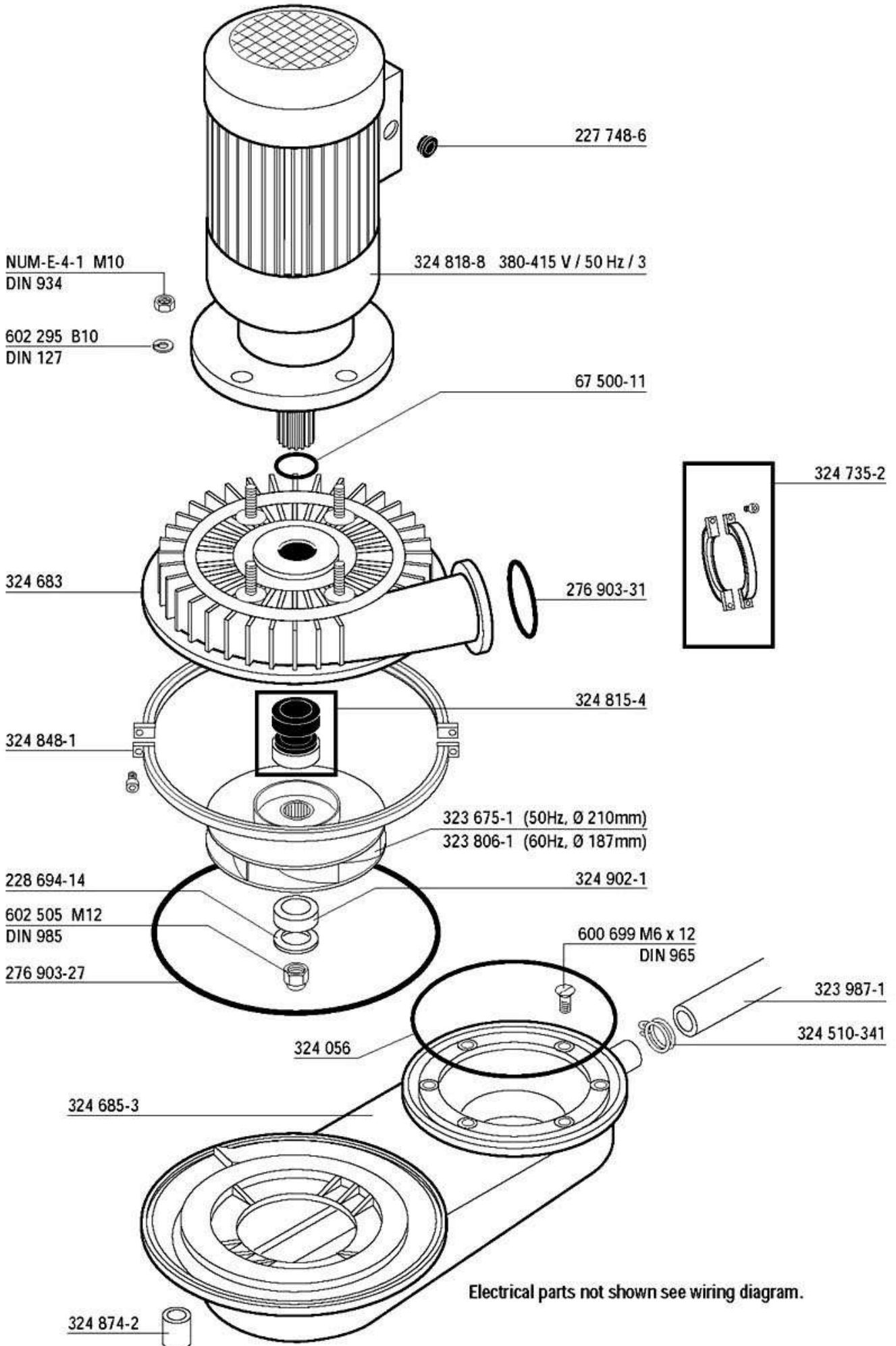




Electrical parts not shown see wiring diagram.

Wash pump (at backside / left)
 Pompe de lavage (arrière / gauche)
 Waschpumpe (hinten / links)
 Waspomp (achteraan / links)

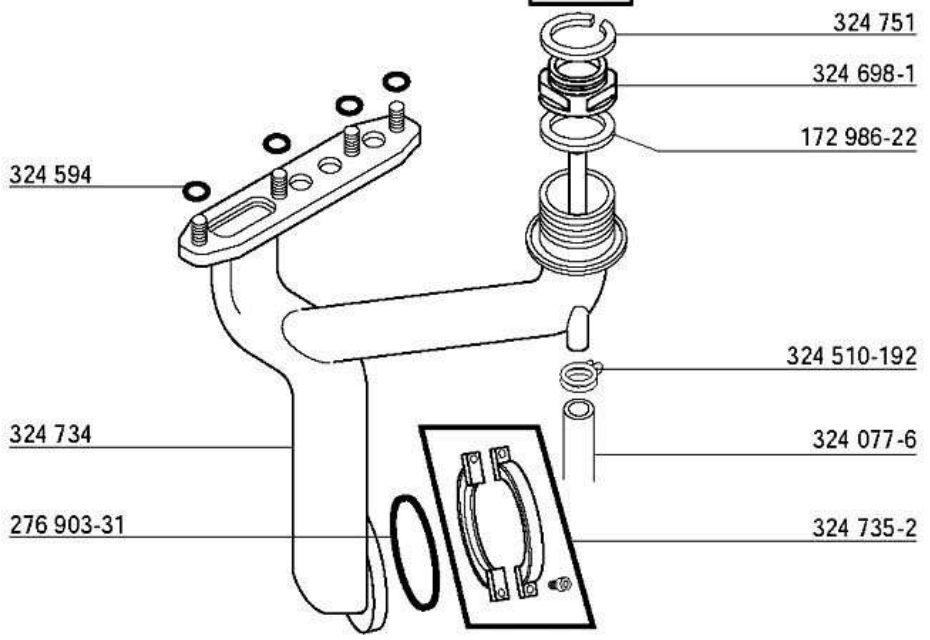
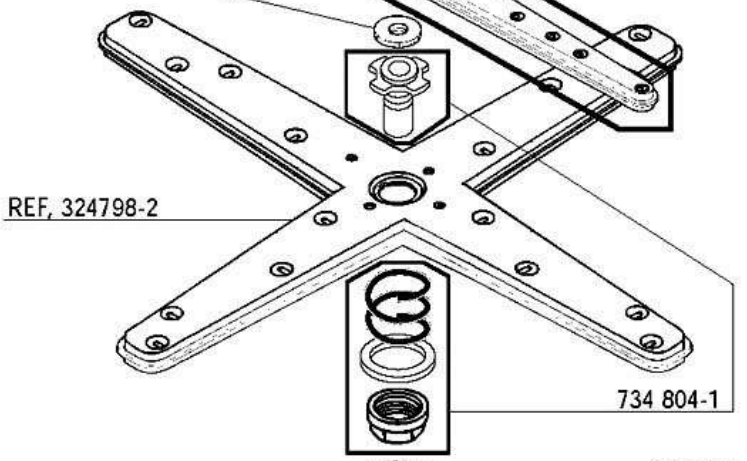
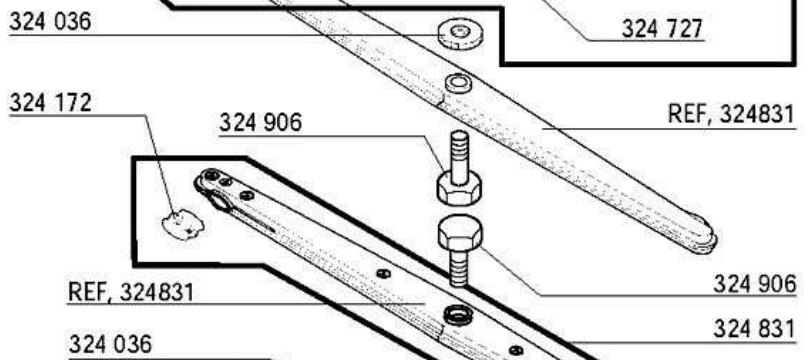
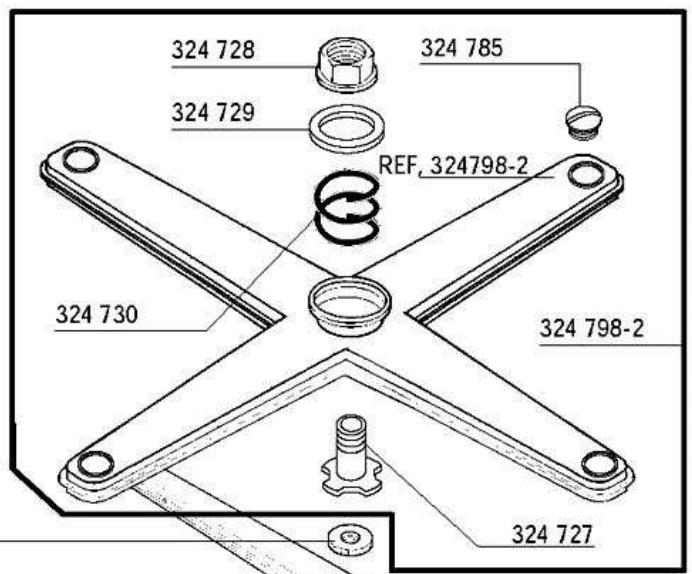
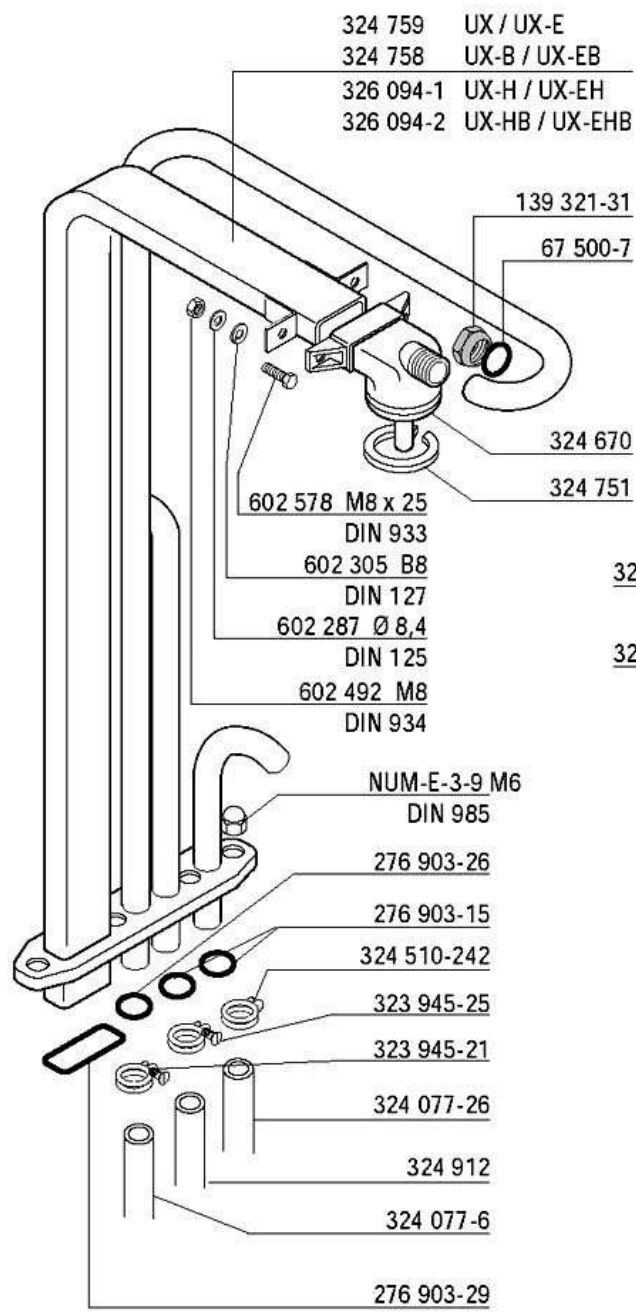
UX-60 UX-60 E
 UX-60 B UX-60 EB
 UX-60 H UX-60 EH
 UX-60 HB UX-60 EHB





Wash and rinse system (right)
 Système de lavage et de rinçage (droite)
 Wasch- und Klarspülsystem (rechts)
 Was- en spoelsysteem (rechts)

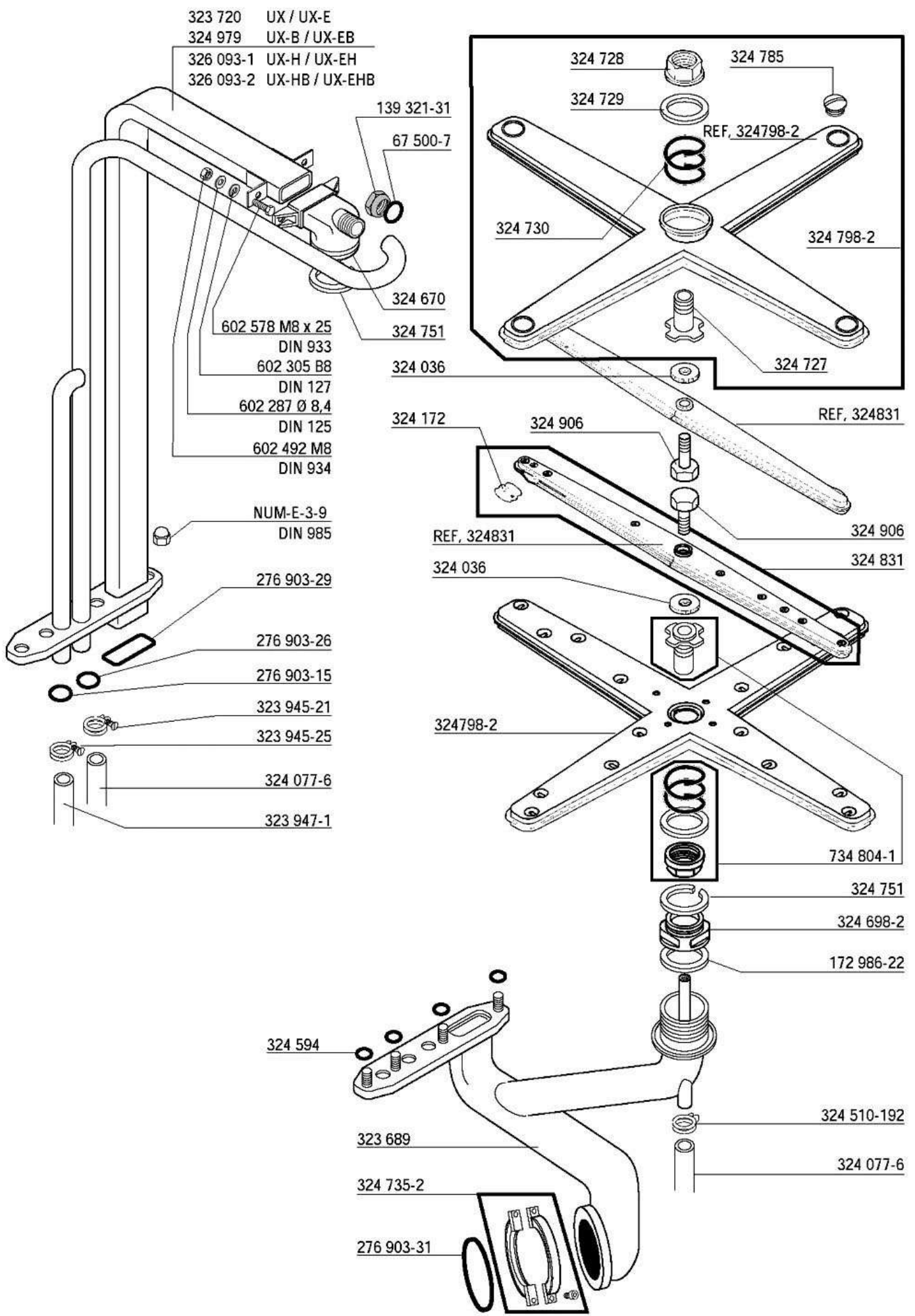
UX-60 UX-60 E
 UX-60 B UX-60 EB
 UX-60 H UX-60 EH
 UX-60 HB UX-60 EHB

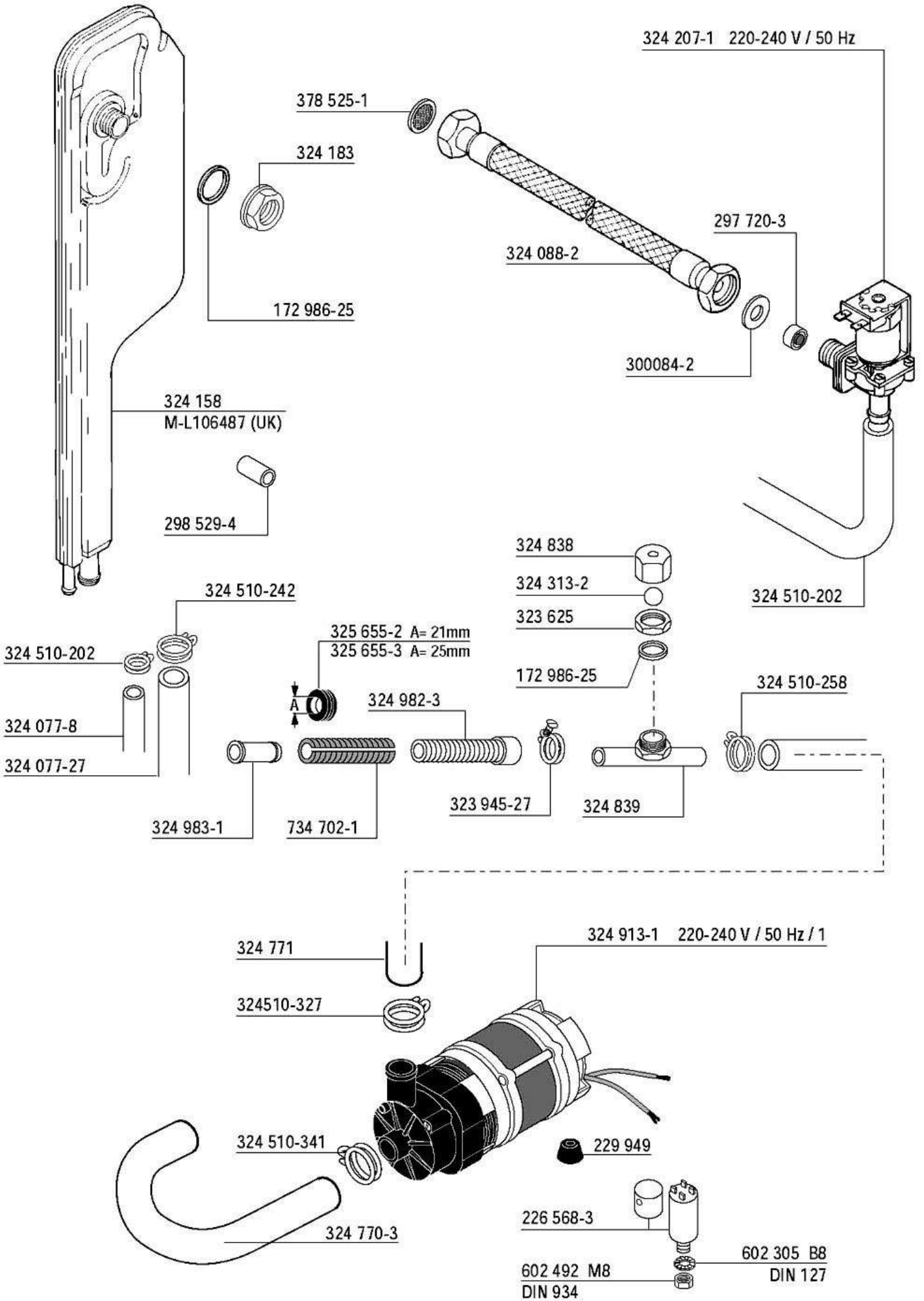




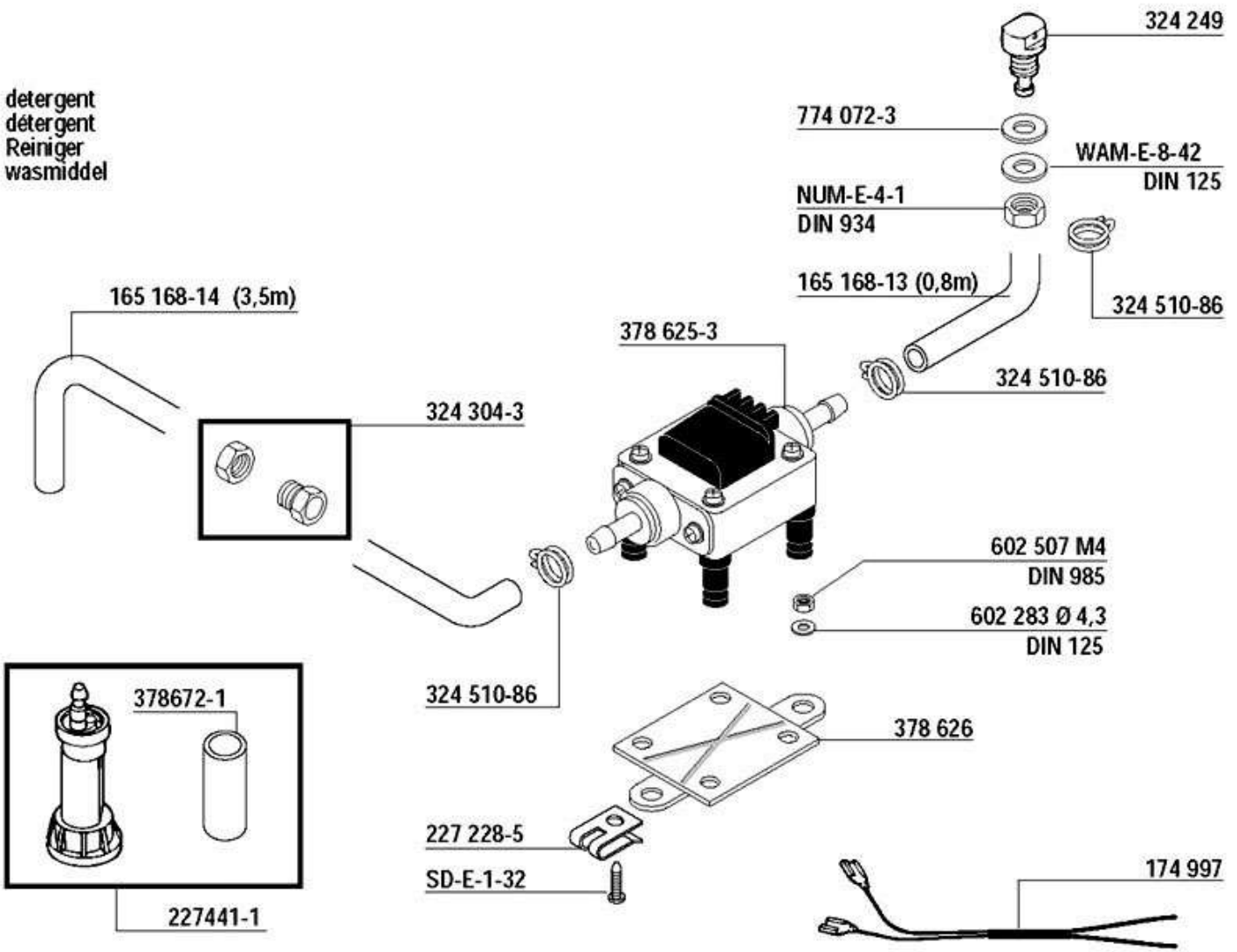
Wash and rinse system (left)
 Système de lavage et de rinçage (gauche)
 Wasch- und Klarspülsystem (links)
 Was- en spoelsysteem (links)

UX-60 UX-60 E
 UX-60 B UX-60 EB
 UX-60 H UX-60 EH
 UX-60 HB UX-60 EHB

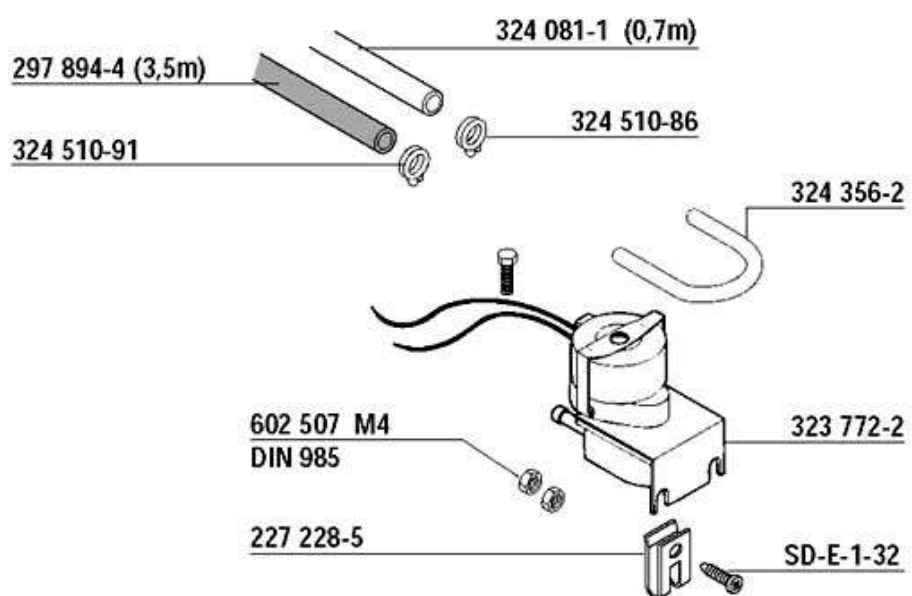


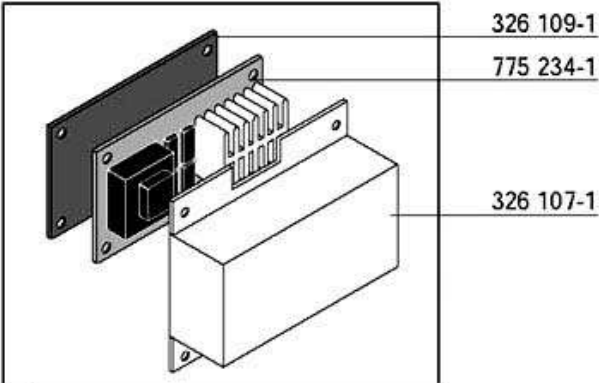
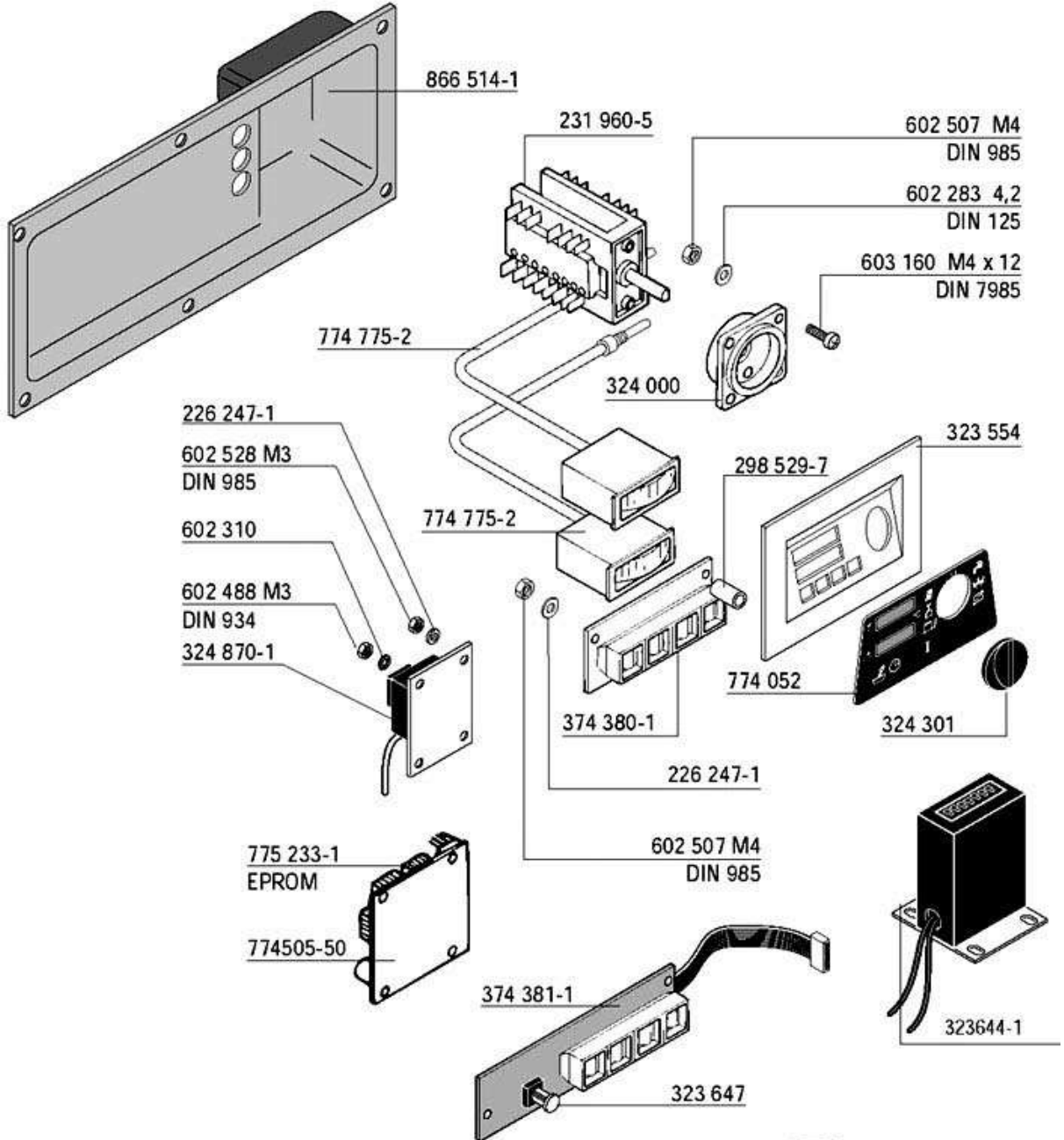


detergent
 détergent
 Reiniger
 wasmiddel

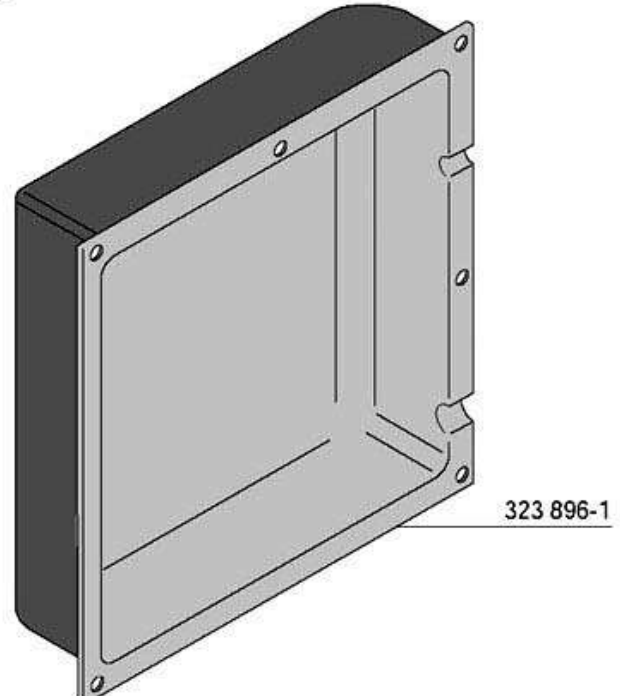


rinse agent
 produit de rincage
 Klarspüler
 naspoelmiddel



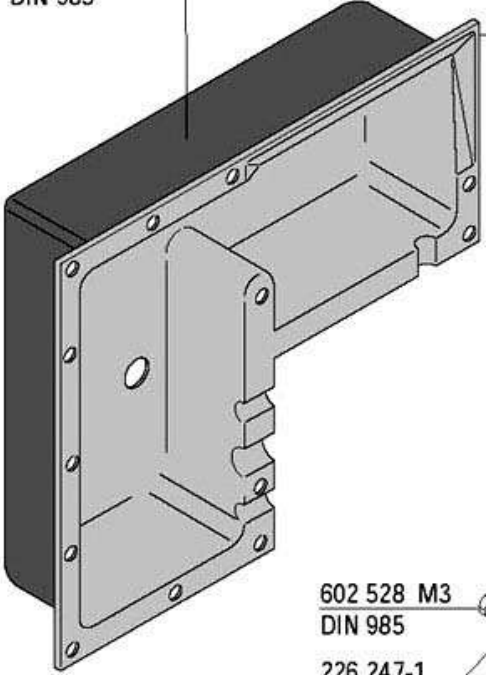


only, seulement, nur, maar H-models

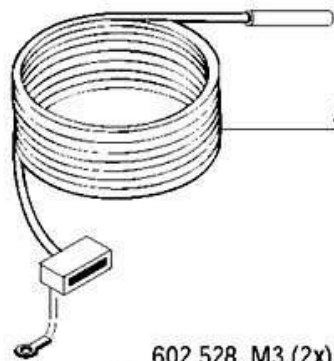


Electrical parts not shown see wiring diagram.

602 507 M4
 DIN 985



323 948-1



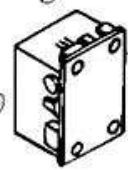
378 584

602 310 (2x)

602 488 M3 (2x)
 DIN 934

602 528 M3 (2x)
 DIN 985

226 247-1 (2x)



378 927

298 529-3

602 528 M3
 DIN 985

226 247-1

602 528 M3
 DIN 985

226 247-1

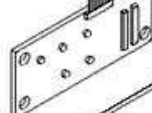
324 291

323 790-1

EPROM
 774 142-1

774 142-11 (only, seulement, nur, maar H-models)

602 507 M3
 DIN 934



168 834-10

323 583

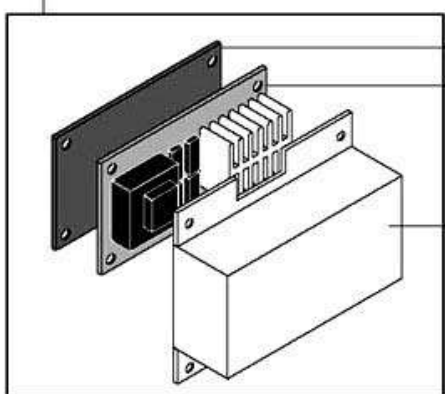
298 529-8



323644-1

324 202 UX-E
 324 201 UX-ES

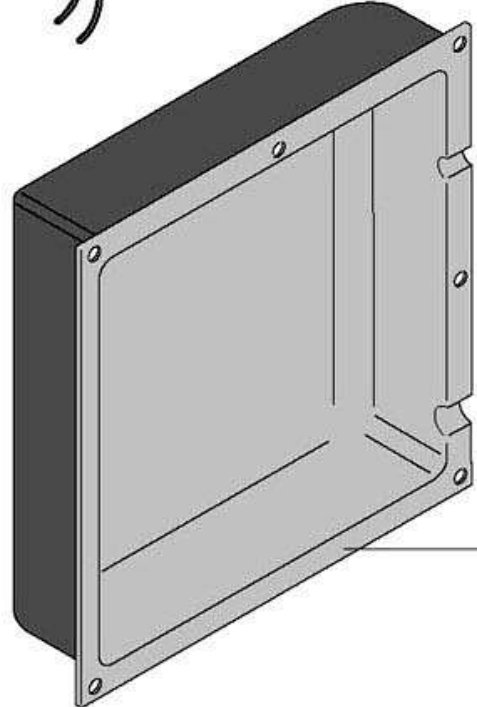
only, seulement, nur, maar H-models



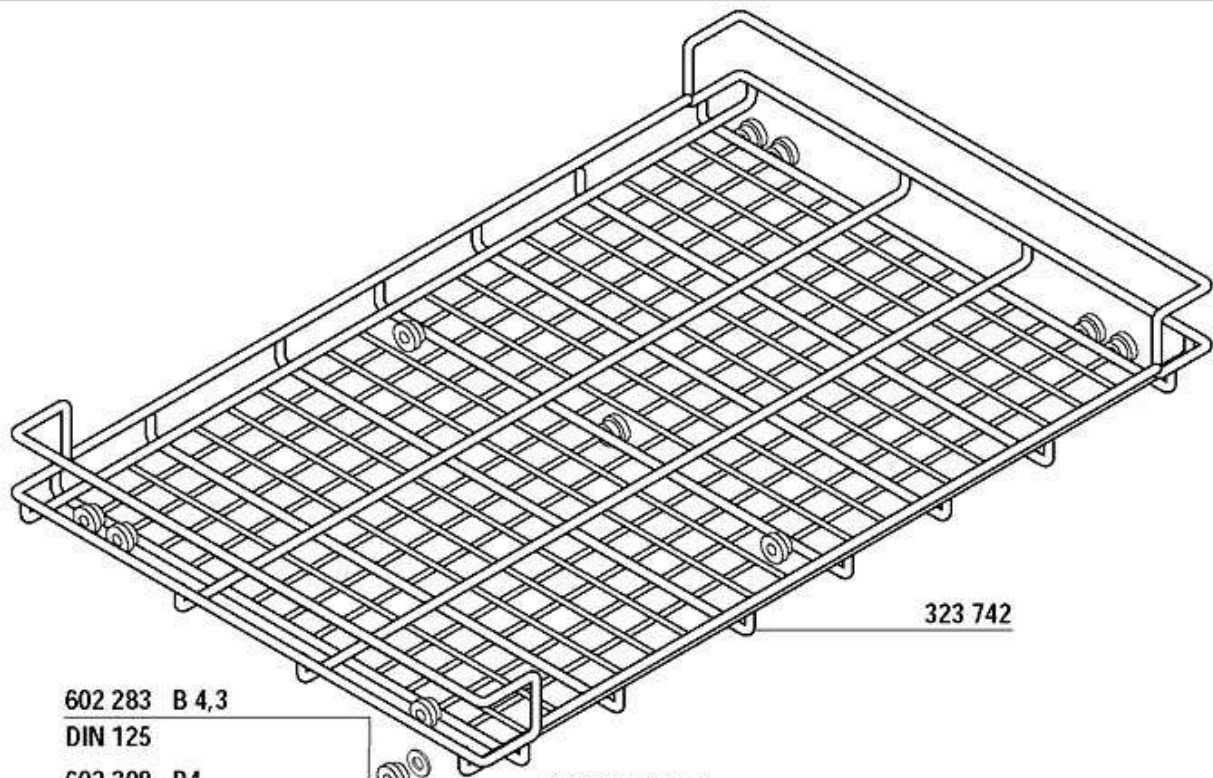
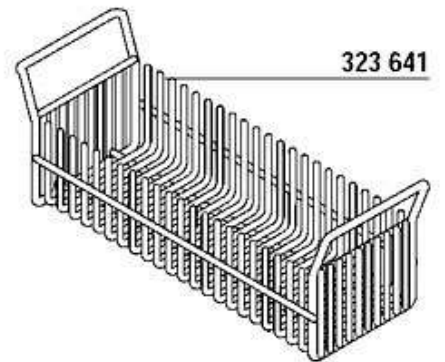
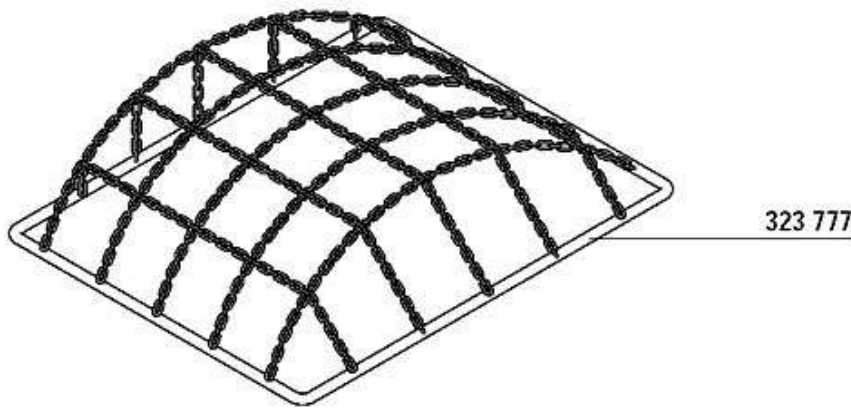
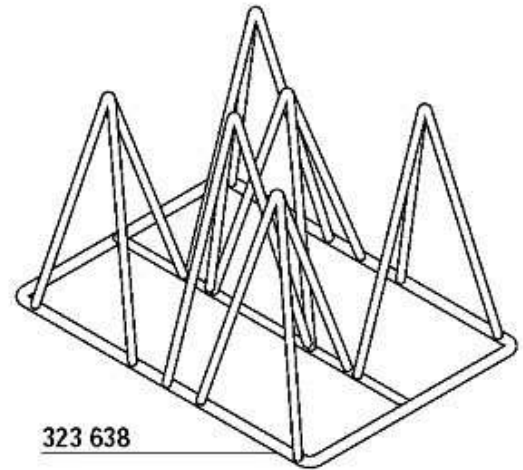
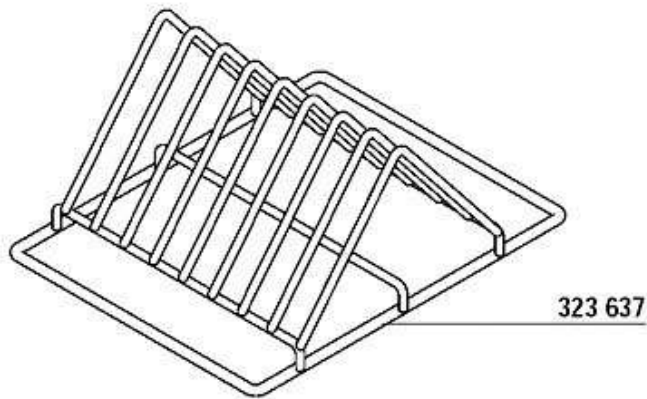
326 109-1
 775 234-1

326 107-1

Electrical parts not shown see wiring diagram.



323 896-1



602 283 B 4,3
DIN 125

602 308 B4
DIN 127

602 691 M4 x 10
DIN 7985

602 287 B 8,4
DIN 125

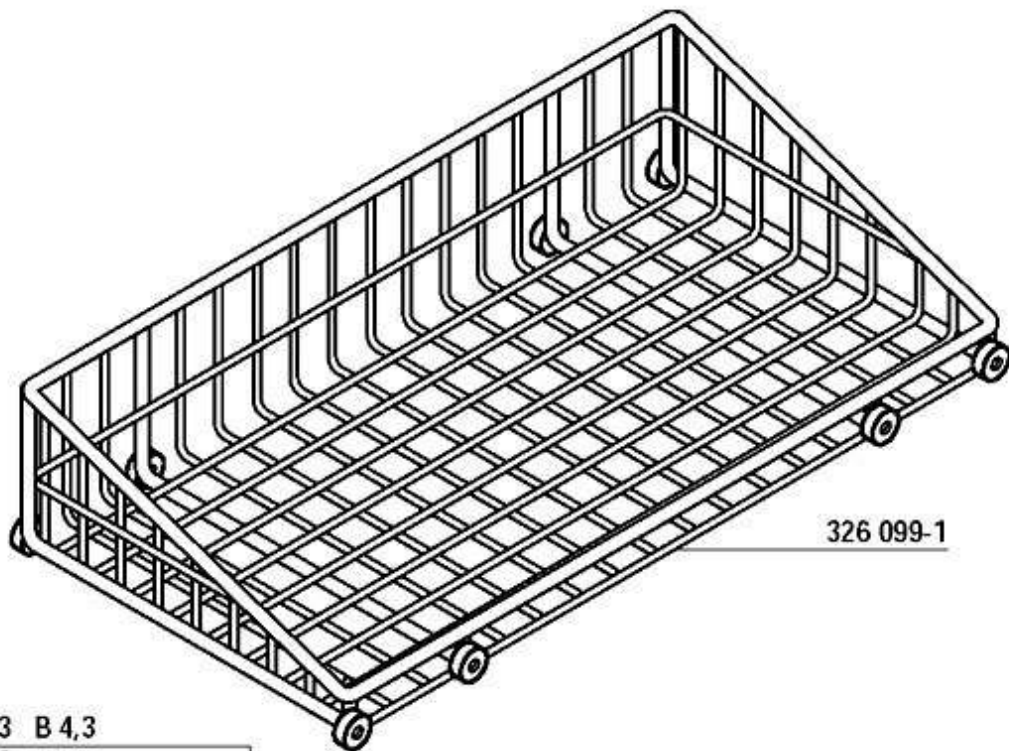
323 743

323 741



Racks
Paniers
Körbe
Korfen

UX-60 H UX-60 EH
UX-60 HB UX-60 EHB

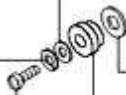


326 099-1

602 283 B 4,3
DIN 125

602 308 B4
DIN 127

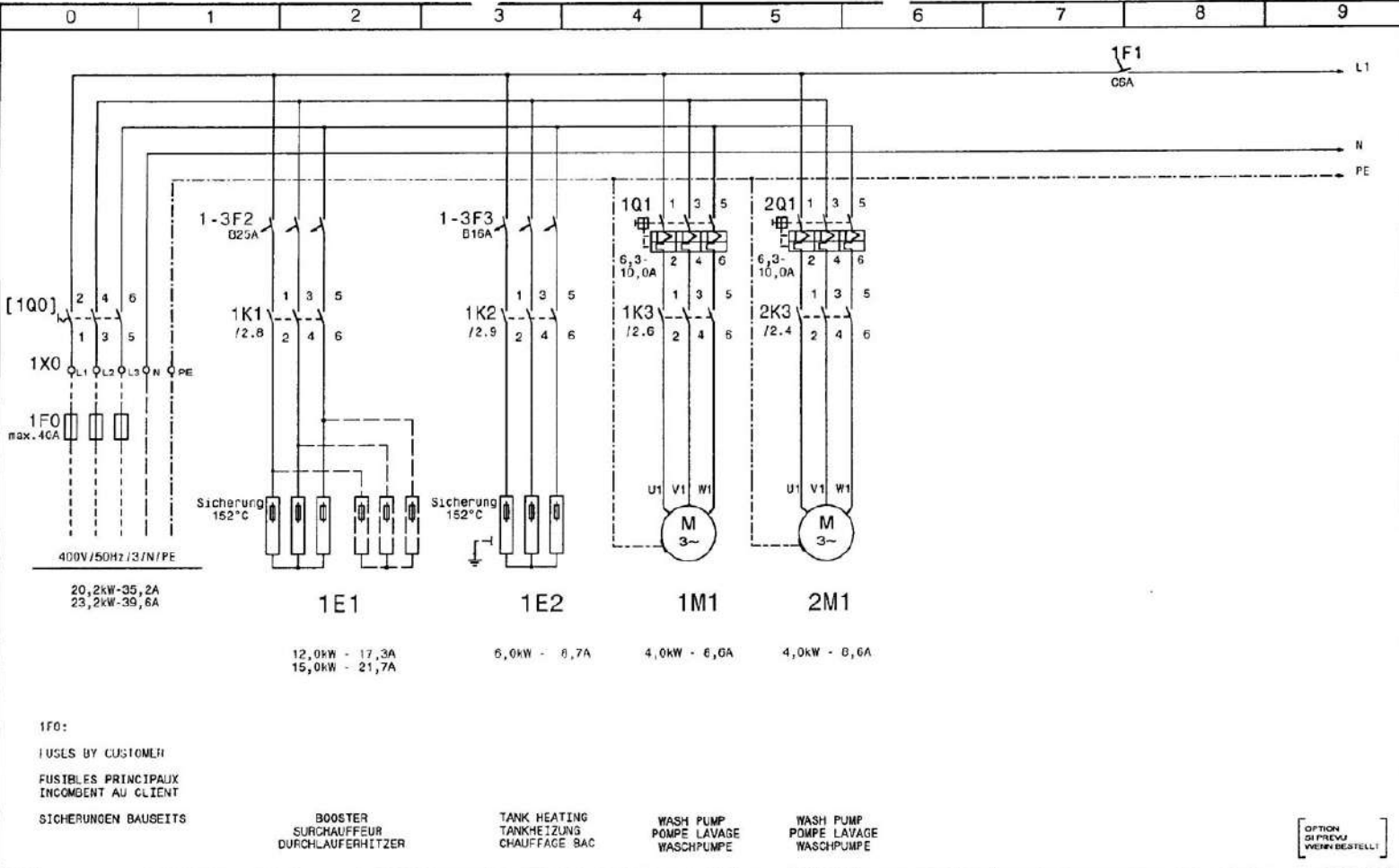
602 691 M4 x 10
DIN 7985



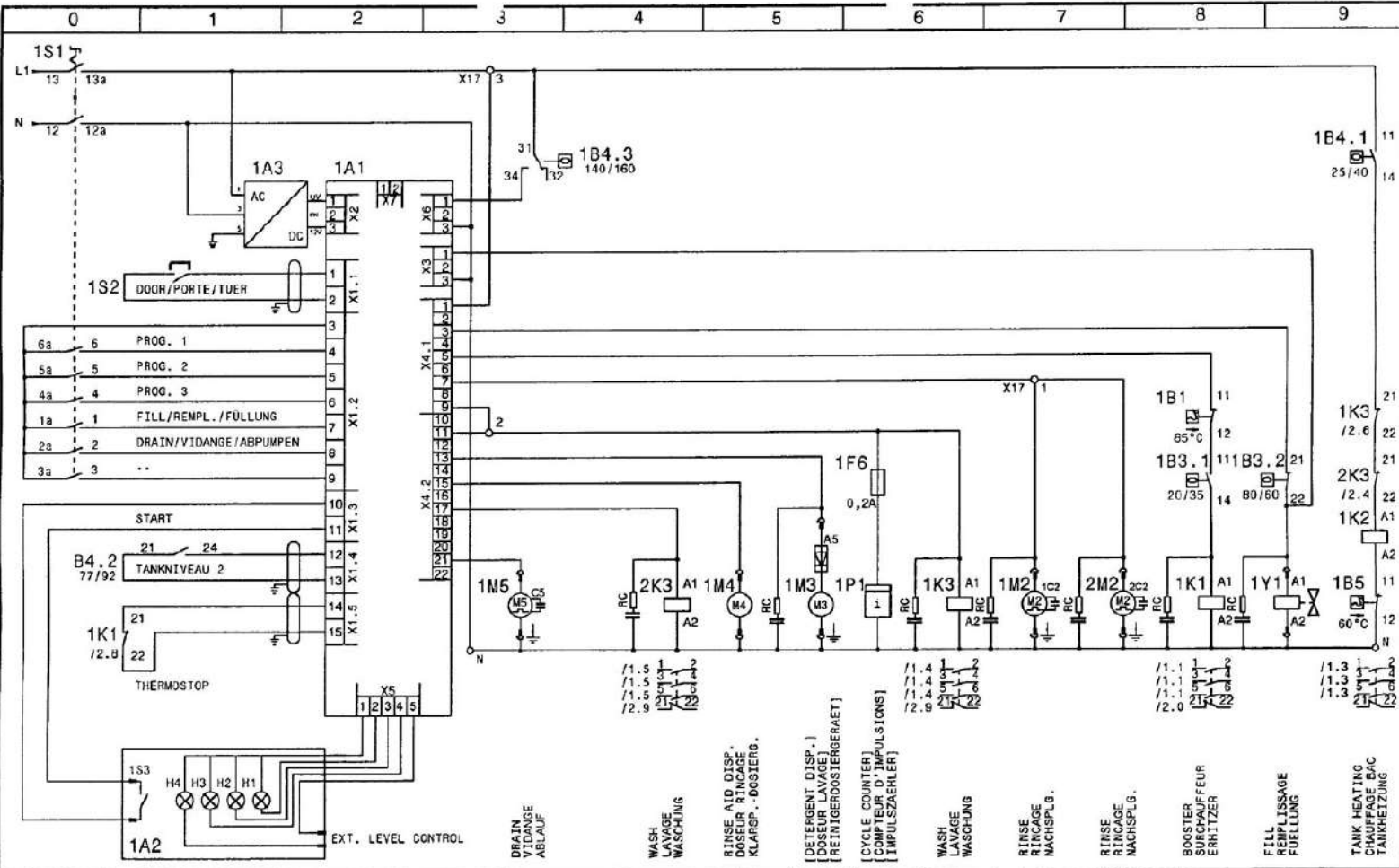
602 287 B 8,4
DIN 125

323 743

326 102-1



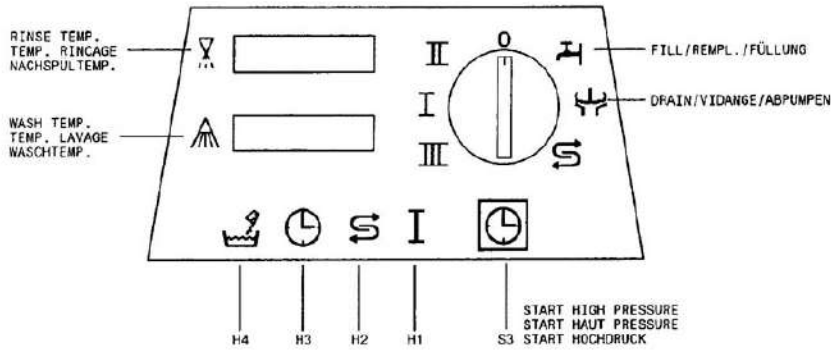
THIS DOCUMENT CONTAINS PROPRIETARY AND CONFIDENTIAL DATA OF HOBART OR ITS SUBSIDIARIES, NO DISCLOSURE, REPRODUCTION OR USE OF ANY PART THEREOF MAY BE MADE WITHOUT WRITTEN PERMISSION OF HOBART. CE DOCUMENT CONTIENT DES DONNEES CONFIDENTIELLES APPARTENANT A HOBART CORPORATION OU SES FILIALES, AUCUNE DIVULGATION, REPRODUCTION OU UTILISATION DE TOUT OU PARTIE DE CE DOCUMENT NE PEUT ETRE FAITE SANS L'AUTORISATION ECRITE DE HOBART. DAS URHEBERRECHT AN DIESER ZEICHNUNG VERBLEIBT BEI DER HOBART CORPORATION ODER EINER IHRER TOCHTER-GESELLSCHAFTEN. JEDE NICHT VON UNS SCHRIFTLICH GENEHMIGTE BENUTZUNG, VERVIELFALTIGUNG, UBERLASSUNG AN DRITTE IST STRAFBAR UND MACHT SCHADENSERSATZPFLICHTIG.	Datum	28.12.99	WIRING DIAGRAM	UX60/UX60H	ELECTRICAL HEATED CHAUFFAGE ELECTRIQUE ELEKTRISCH BEHEIZT
	Bearb.	Klenn	SCHEMA ELECTRIQUE		
	Gepf.		SCHALTPLAN		
REV.				400V/50Hz/3/N/PE - 12,0/15,0kW	
INDICE	L	HOBART		A-691 770-22	Blatt 1
ANDER.					von 4 Bl.



THIS DOCUMENT CONTAINS PROPRIETARY AND CONFIDENTIAL DATA OF HOBART OR ITS SUBSIDIARIES. NO DISCLOSURE, REPRODUCTION OR USE OF ANY PART THEREOF MAY BE MADE WITHOUT WRITTEN PERMISSION OF HOBART.
 CE DOCUMENT CONTIENT DES DONNÉES CONFIDENTIELLES APPARTENANT À HOBART CORPORATION OU SES FILIALES. AUCUNE DIVULGATION, REPRODUCTION OU UTILISATION DE TOUT OU PARTIE DE CE DOCUMENT NE PEUT ÊTRE FAITE SANS L'AUTORISATION ÉCRITE DE HOBART.
 DAS URHEBERRECHT AN DIESER ZEICHNUNG VERBLEIBT BEI DER HOBART CORPORATION ODER EINER IHRER TOCHTERGESELLSCHAFTEN. JEDE NICHT VON UNS SCHRIFTLICH GENEHMIGTE BENUTZUNG, VERVIELFÄLTIGUNG, ÜBERLASSUNG AN DRITTE IST STRAFBAR UND MACHT SCHADENSERSATZPFLICHTIG.

Datum	28.12.99	WIRING DIAGRAM	UX60/UX60H	ELECTRICAL HEATED CHAUFFAGE ÉLECTRIQUE ELEKTRISCH BEHEIZT
Bearb.	Klamm	SCHEMA ELECTRIQUE		
Gepr.		SCHALTPLAN		
REV.		HOBART	400V/50Hz/3/N/PE - 12,0/15,0kW	
INDEXE ÄNDER.	L		A-691 770-22	Blatt 2 von 4 Bl.

	DRAWING NR. DESSIN NO. ZEICHNUNG.-NR.	TECHNICAL DATA CARACTERISTIQUES TECHN. DATEN	PART NAME DESIGNATION BENENNUNG		DRAWING NR. DESSIN NO. ZEICHNUNG.-NR.	TECHNICAL DATA CARACTERISTIQUES TECHN. DATEN	PART NAME DESIGNATION BENENNUNG		DRAWING NR. DESSIN NO. ZEICHNUNG.-NR.	TECHNICAL DATA CARACTERISTIQUES TECHN. DATEN	PART NAME DESIGNATION BENENNUNG
A1	774 505-50		PROCESSOR PCP PROCESSEURPCB PROZESSORPLATINE	F2	B-695 520-6	B-25A	CIRCUIT BREAKER COUPE-CIRCUIT AUTOM. SICHERUNGSAUTOMAT	RC	B-301 853	max. 250V/0,22µF	RC-ELEMENTS FILTRE RC RC-GLIED
	775 233-1		EPROM	F3	B-695 520-4	B-16A	CIRCUIT BREAKER COUPE-CIRCUIT AUTOM. SICHERUNGSAUTOMAT				
A2	C-324 916-1		DISPLAY CIRCUIT PLATINE D'AFFICHAGE ANZEIGEPLAT.	F6	D / 05 290-43 228 047	250V - 0,2A	FUSE CARTRIDGE FUSIBLE SICHERUNG	S1	D-231 960-5	max. 400V	ROTARY SWITCH SELECTEUR ROTATIF NOCKENSCHALTER
A3	B-324 870-4	220-240V/50-60Hz	POWER SUPPLY PLAT. D'ALIMENTATION NETZTEIL					S2	B-297 980-4	max. 250V	DOOR SWITCH INTER. PORTE TÜRSCHALTER
[A5]	B-174 997		CONNECTION CABLE CABLE DE BRANCHEMENT ANSCHLUSSLEITUNG	K1	C-296 926-22	230V-240V/50Hz	CONTACTOR CONTACTEUR SCHÜTZ				
				K2	C-322 057-5	230V/50-60Hz	CONTACTOR CONTACTEUR SCHÜTZ	X0	B-323 979-1 B-323 979-2 B-323 979-3	L1, L2, L3 N PE	MAIN TERMINALS BORNIER 10mm ² ANSCHLUSSKLEMMEN
B1	C-226 505-4	max. 16A/380V AC	THERMOSTAT	K3	B-695 521-1	230-240V/50Hz	CONTACTOR CONTACTEUR SCHÜTZ	X17	B-324 888-1 [B-324 888-2]	GREY/GRIS/GRAU BLUE/BLEU/BLAU	TERMINAL 2,5mm ² BORNE REIHENKLENME
B3	C-231 981-6	11-14: 230V/3,0A 21-24: 230V/3,0A 31-34: 230V/3,0A	LEVEL SWITCH BOOSTER PRESSOSTAT SURCH. DRUCKSCHALTER BOILER								
B4	C-376 760-4	11-14: 230V/3,0A 21-24: 12V/1,0A 31-34: 230V/3,0A	LEVEL SWITCH TANK PRESSOSTAT BAC DRUCKSCHALTER TANK	M1	D-324 818-8	400V/50Hz/3	MOTOR WASHPUMP POMPE DE LAVAGE MOTOR WASHPUMPE	Y1	C-324 207-1	220V-240V/50-60Hz	SOLENOID VALVE ELECTROVANNE MAGNETVENTIL
B5	C-226 505-2	max. 16A/380V AC	THERMOSTAT	M2	D-324 914-1	220-240V/50Hz/1	RINSE PUMP POMPE RINCAGE NACHSPÜLPUMPE				
				[M3]	C-376 625-1	220-240V/50-60Hz	DETERGENT DISPENSER DOSEUR LAVAGE REINIGERDISPENSERGERÄT				



BASIC SETTINGS:
 RÉGLAGE DE BASE:
 GRUNDEINSTELLUNG:

775 233-1

TYPE:
 UX60(B)

HEX-POS.:
 5

RINSE TIME: DIP-SWITCH 1 "ON" = 14sec.
 RINGAGE: DIP-SWITCH 1 "OFF" = 11sec.
 NACHSPULZEIT:

THERMOSTOP: DIP-SWITCH 2 "ON" - without
 THERMOSTOP: DIP-SWITCH 2 "OFF" - ohne

S1 KONTAKT NR:	1 2 3 4 5 6 7 8 9 10 11 12 13 14 15 16															
	1a	2a	3a	4a	5a	6a	7a	8a	9a	10a	11a	12a	13a	14a	15a	16a
0																
FÜLLUNG FILL		X														
ABLAUF DRAIN			X													
...				X												
BOILER FÜLLUNG BOOSTER FILL																
PROG. 3					X											
PROG. 1						X										
PROG. 2							X									

CONTACT CLOSED
 CONTACT FERMÉ
 KONTAKT GESCHLOSSEN

PAGE/LTR. PAGE/INDEX	REVISION MODIFICATION ÄNDERUNG	DATE DATE DATUM	ECN-NR. #00, ECN-NR.
1-4 L	UX60/UX60S only	02.02.00	T. Klein
1-4 K	Now Drawn	28.12.99	T. Klein
	± 324 778-3 (1A1)		
+	ADD AJOUTER HINZU	-	REMOVE SUPPRIMER ENTFÄLLT
		±	WAS ÉTAIT WAR

THIS DOCUMENT CONTAINS PROPRIETARY AND CONFIDENTIAL DATA OF HOBART OR ITS SUBSIDIARIES. NO DISCLOSURE, REPRODUCTION OR USE OF ANY PART THEREOF MAY BE MADE WITHOUT WRITTEN PERMISSION OF HOBART.
 CE DOCUMENT CONTIENT DES DONNÉES CONFIDENTIELLES APPARTENANT À HOBART CORPORATION OU SES FILIALES. AUCUNE DIVULGATION, REPRODUCTION OU UTILISATION DE TOUT OU PARTIE DE CE DOCUMENT NE PEUT ÊTRE FAITE SANS L'AUTORISATION ÉCRITE DE HOBART.
 DAS URHEBERRECHT AN DIESER ZEICHNUNG VERBLEIBT BEI DER HOBART CORPORATION ODER EINER IHRER TOCHTERGESELLSCHAFTEN JEDE NICHT VON UNS SCHRIFTLICH GENEHMIGTE BENUTZUNG, VERVIELFÄLTIGUNG, ÜBERLASSUNG AN DRITTE IST STRAFBAR UND MACHT SCHADENSERSATZPFLICHTIG.

Datum	28.12.99	WIRING DIAGRAMM
Bearb.	Klein	SCHEMA ELECTRIQUE
Geprf.		SCHALTPLAN
REV.		
INDEX	L	
ÄNDER.		

UX60/UX60H ELECTRICAL HEATED
 CHAUFFAGE ELECTRIQUE
 ELEKTRISCH BEHEIZT

400V/50Hz/3/N/PE - 12,0/15,0kW

A-691 770-22 Blatt 4
 von 4 Bl.

